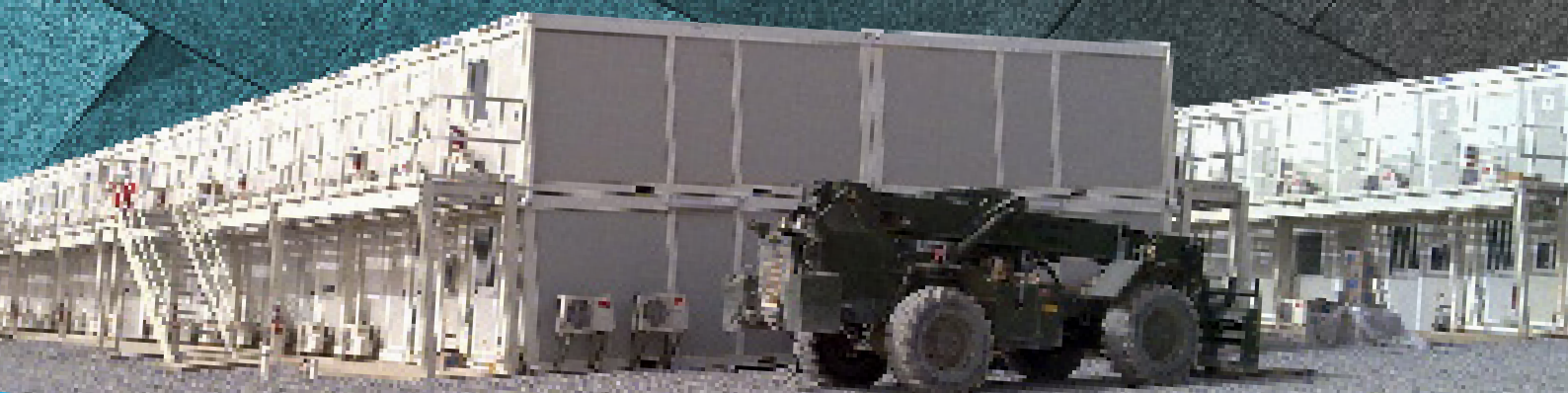
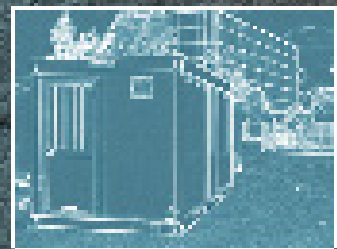
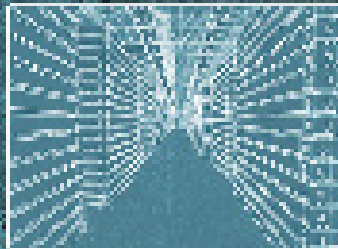
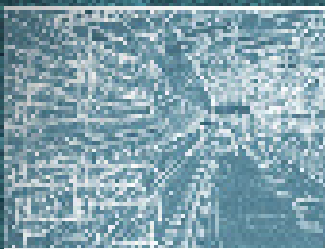
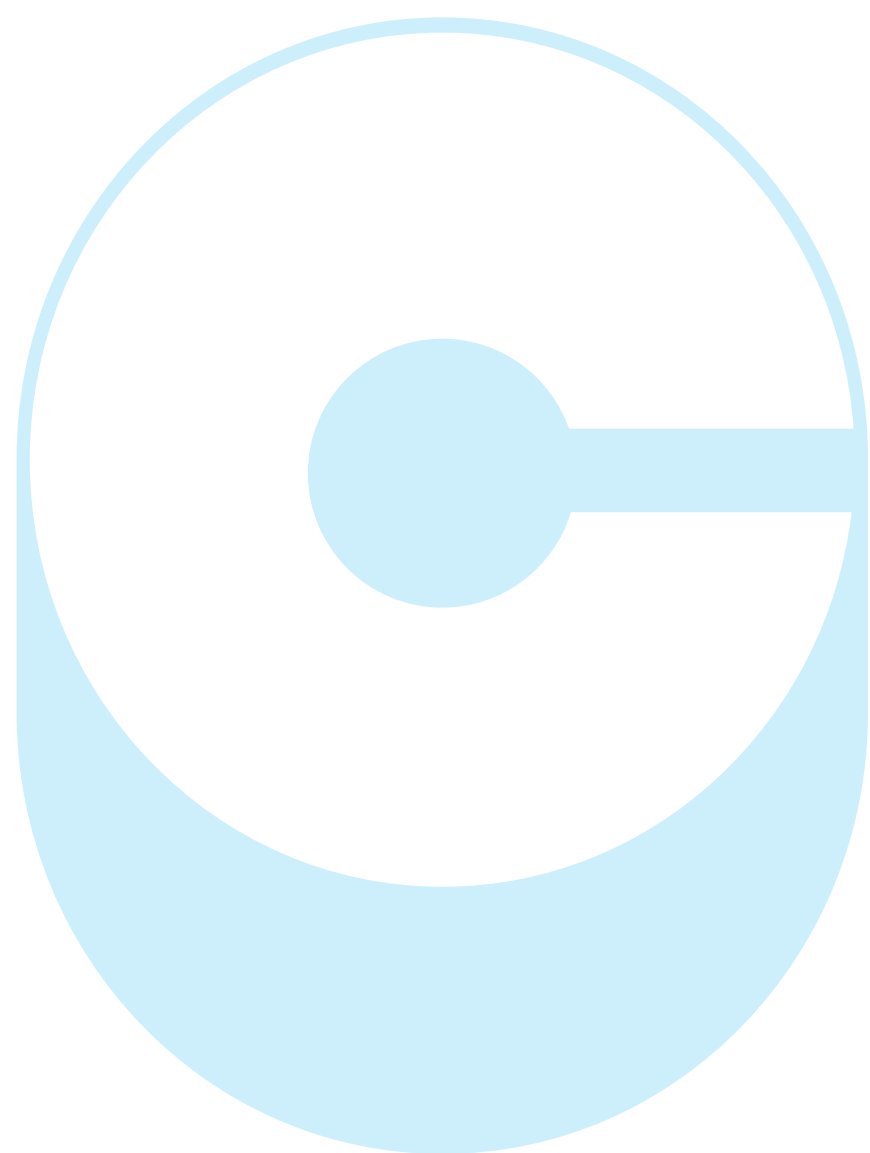


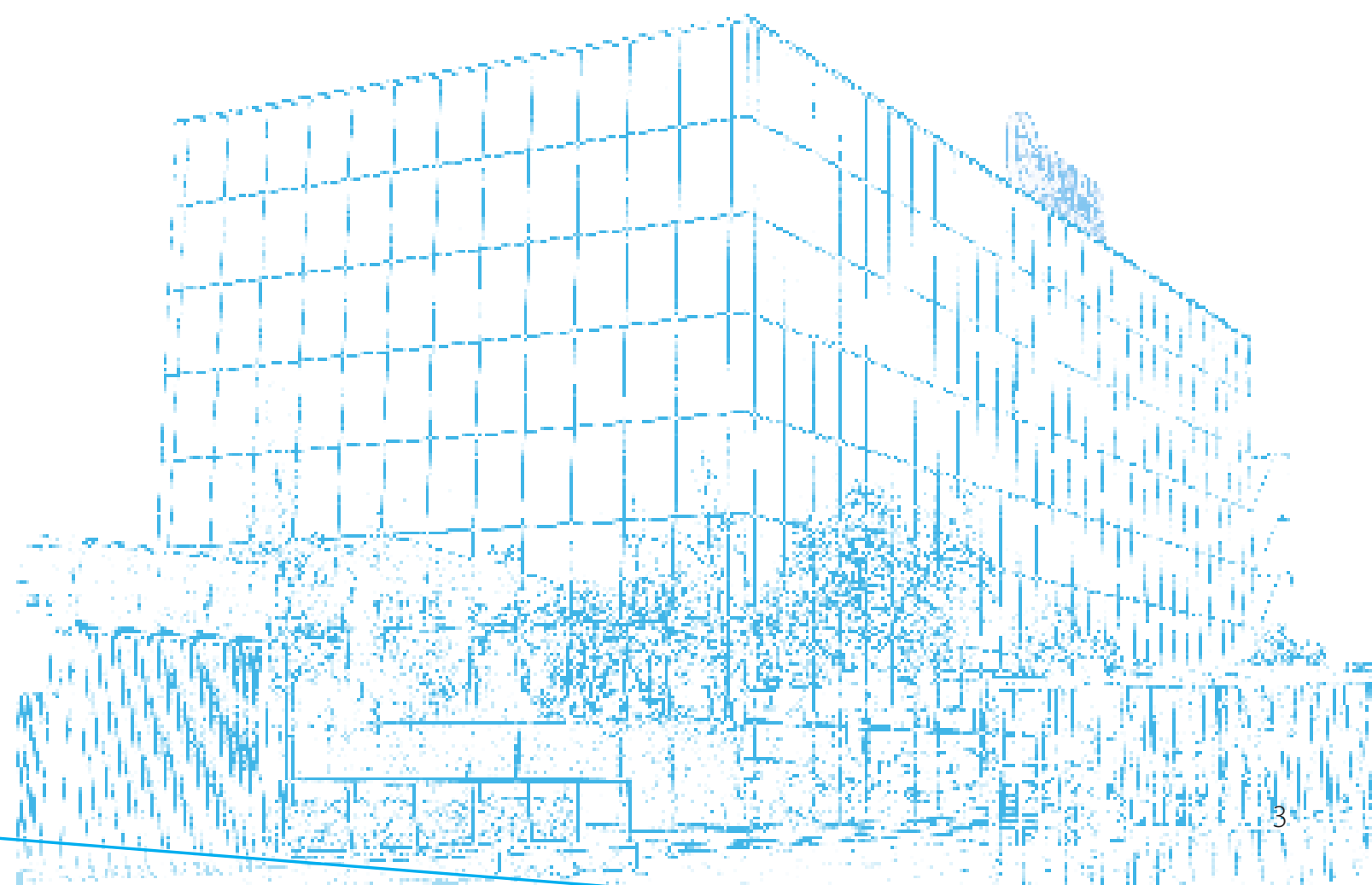


Manufacturer of GLOBAL Remote Building Solutions





Corimec: consider it done!



CO.RI.MEC. Italiana S.p.A.

CO.RI.MEC. is a well-established Italian manufacturer of Prefabricated Modular Buildings that plays a leading role on the worldwide market.

Modular Housing Solutions :

- Prefabricated Containerized Mobile Units/Buildings
- Prefabricated Steel-Frame Buildings
- Turn-Key Camps
- Industrial Constructions

The GROUP



- Head Office
- Support Base
- Manufacturing Facilities
- Assembling Facilities

CO.RI.MEC. Italiana S.p.A.

CO.RI.MEC. designs and manufactures Prefabricated Modular Buildings in a huge variety of configurations equipped with a wide range of options tailored to each Client's specific requirements.

CO.RI.MEC. has been providing its products and services throughout the Five Continents.



Core Values

Commitment to Health, Safety and Environment

Innovation

Teamwork

Transparency

Reliability

Respect

Responsibility

Social Awareness

Sustainability

Health, Safety and Environment

We care about your and our people's health and safety; we respect the environment.

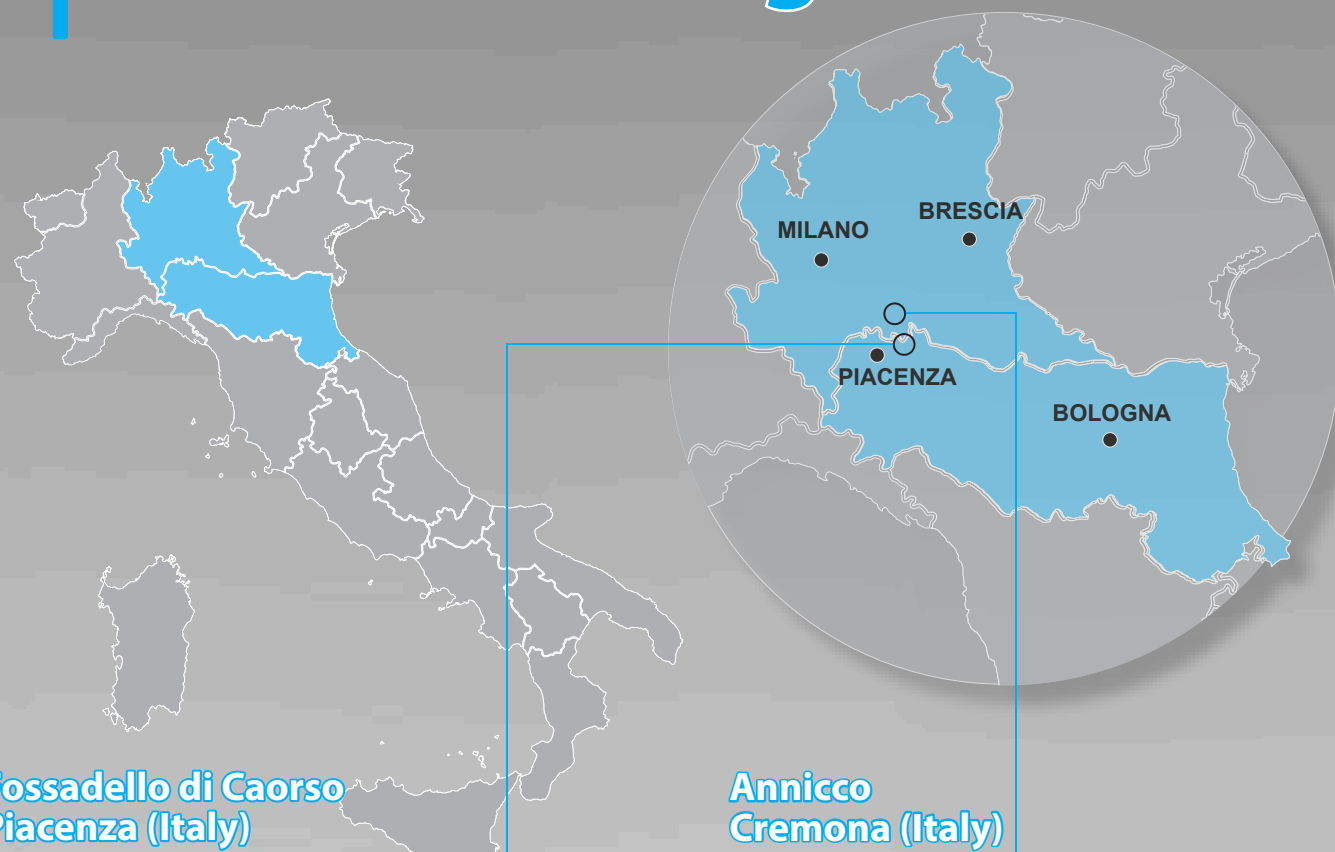


Quality Policy Statement

The Client's requirements are our priority.

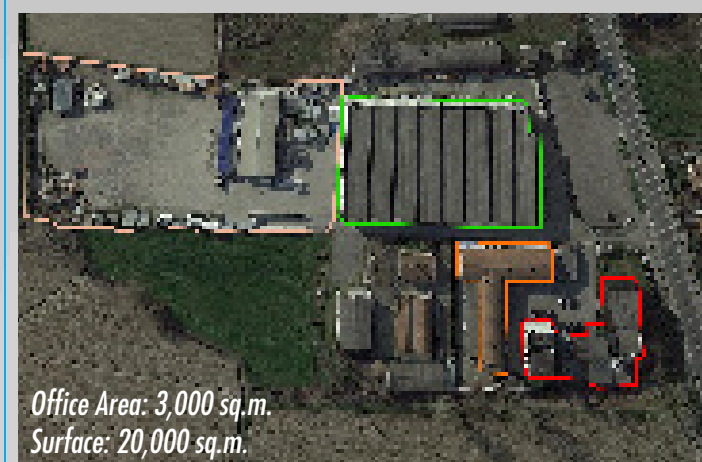
Our Quality Management System is ISO 9001:2008 certified.

Manufacturing Facilities



**Fossadello di Caorso
Piacenza (Italy)**

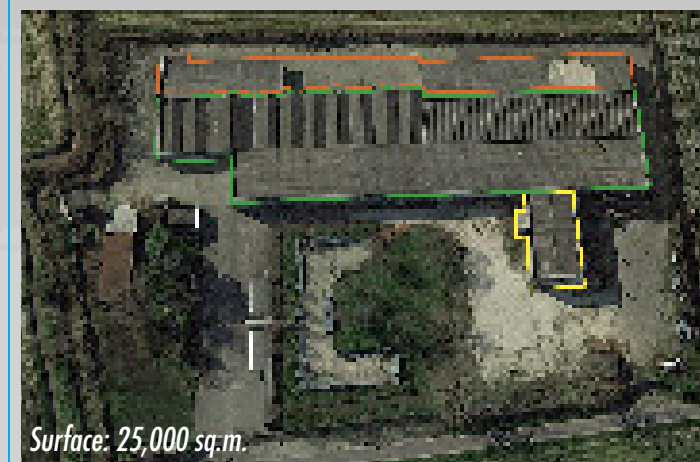
- Manufacturing and Assembly Area
- Head Offices
- Exposition Area
- Material Storage



Office Area: 3,000 sq.m.
Surface: 20,000 sq.m.

**Annicco
Cremona (Italy)**

- Framework Manufacturing
- Material Storage
- Painting Area



Surface: 25,000 sq.m.

Production Capability

Containerized Units: 1,500 sq.m./day
Prefabricated Buildings: 1,000 sq.m./day

Prefabricated Structures
(Light Structures): 50 tons/day
Steel Structural Work
(Heavy Structures): 80 tons/day



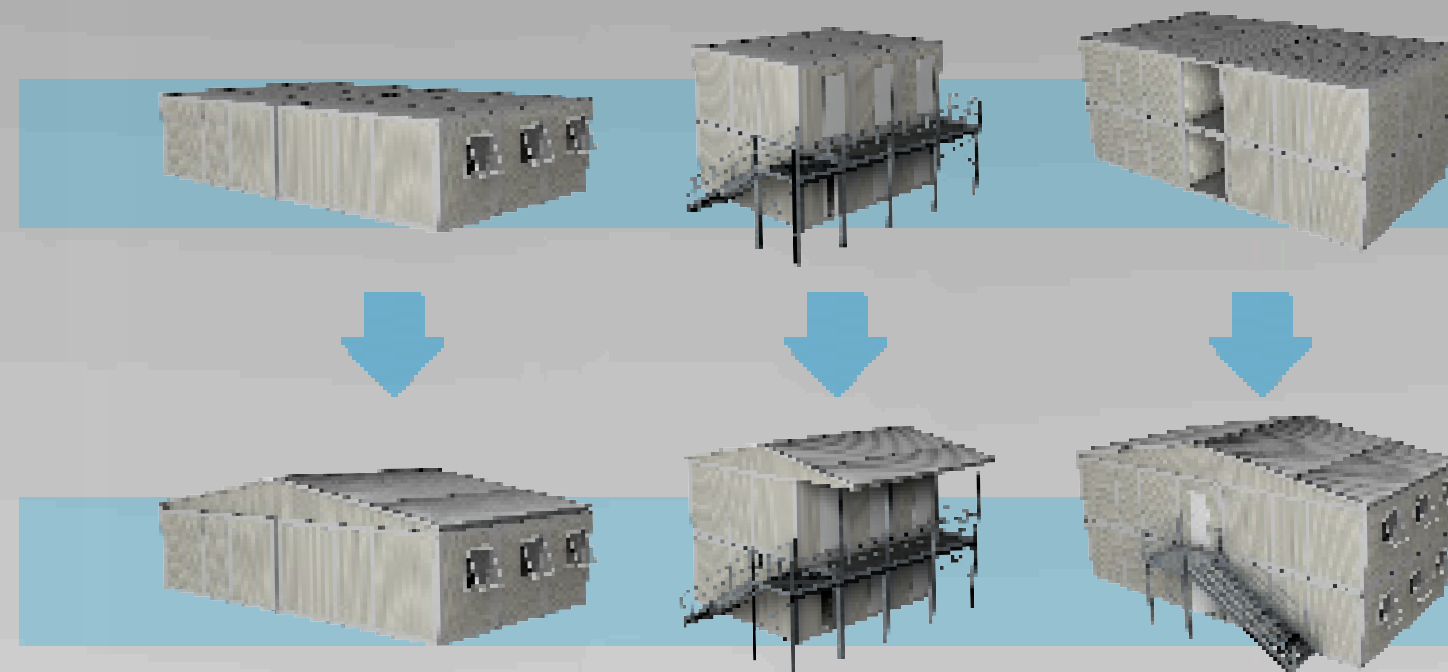
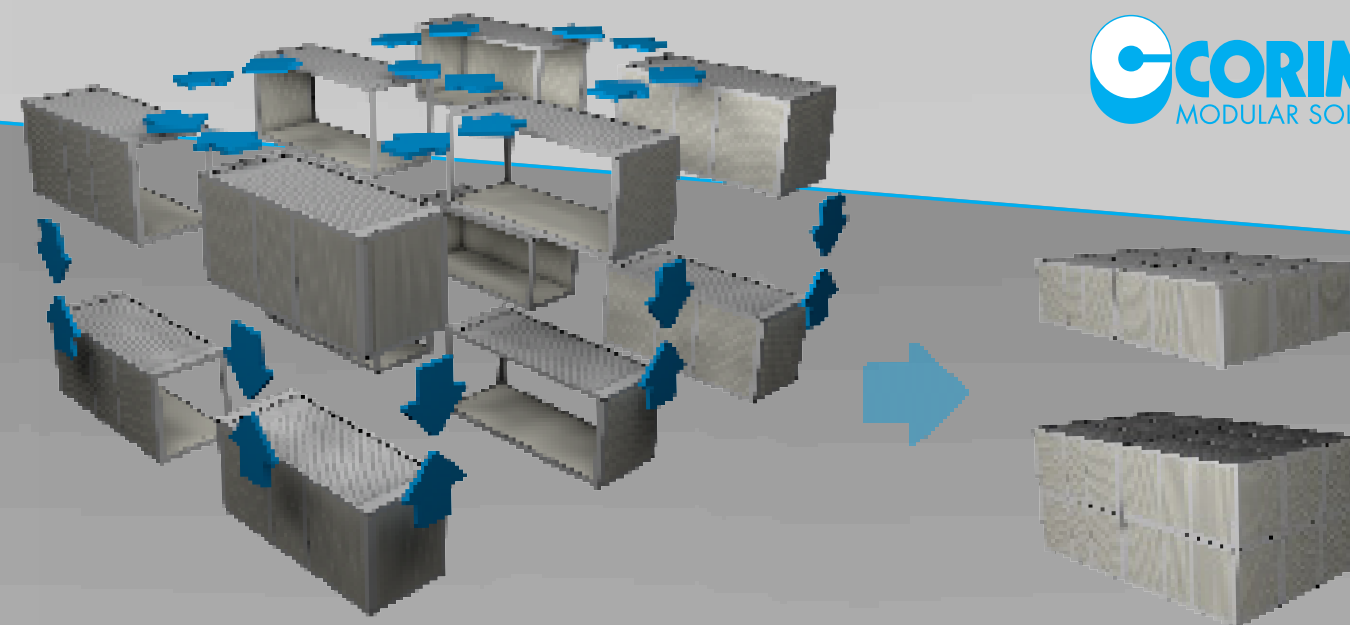
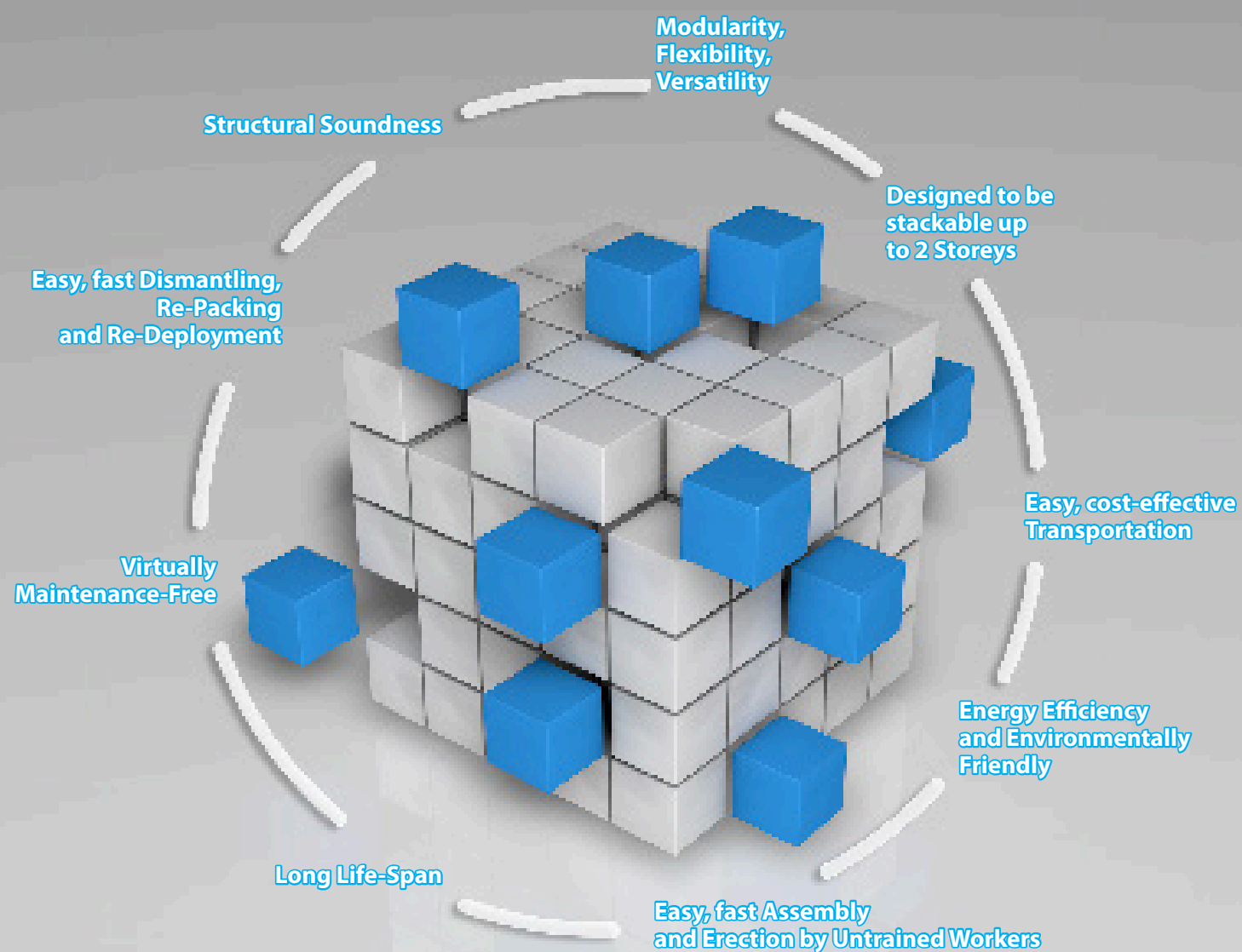
Turnkey Capability



CO.RI.MEC. Global Clients



Containerized Units



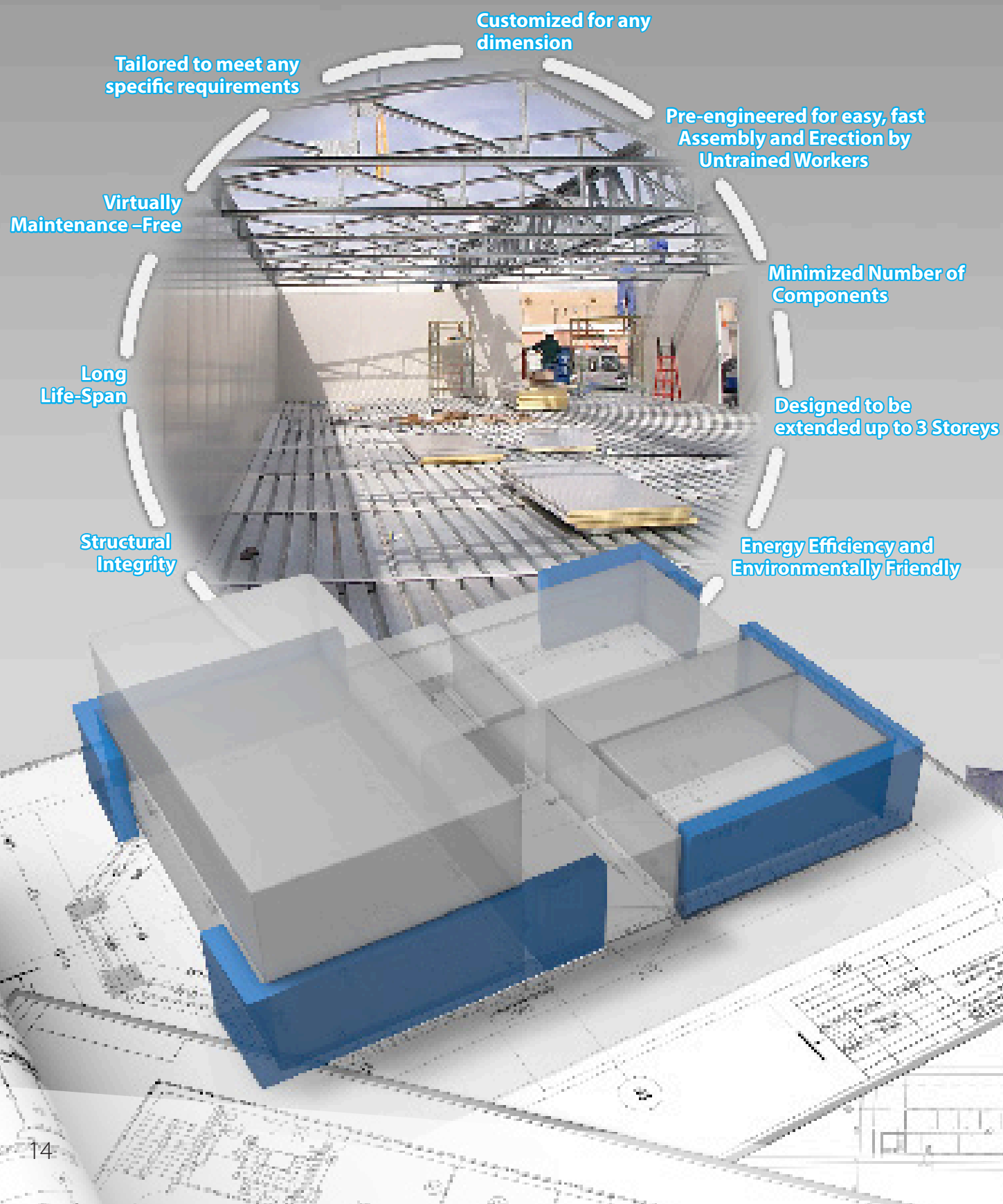
Simple Coupling

Side Corridor

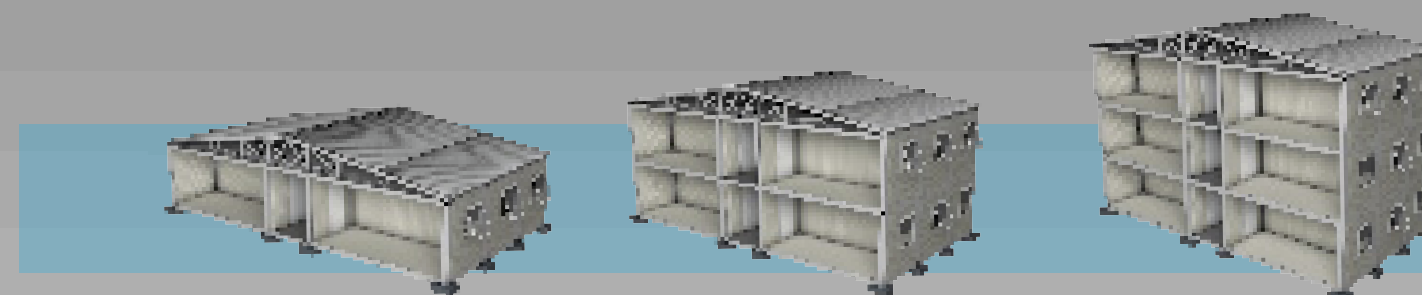
Central Corridor



Prefabricated Buildings



Horizontal & Vertical Building Growth



Single Floor

Double Floor

Triple Floor



Emergency

Construction

Mining

Oil & Gas

Military

Customized

Market Sectors

CORIMEC
MODULAR SOLUTIONS

16

17

A collage of images showing various applications of CORIMEC modular solutions across different market sectors. The sectors listed are Emergency, Construction, Mining, Oil & Gas, Military, and Customized. The collage includes photos of modular units, heavy machinery, and technical drawings of modular layouts.

A collage of images showing various applications of CORIMEC modular solutions across different market sectors. The sectors listed are Emergency, Construction, Mining, Oil & Gas, Military, and Customized. The collage includes photos of modular units, heavy machinery, and technical drawings of modular layouts.

A collage of images showing various applications of CORIMEC modular solutions across different market sectors. The sectors listed are Emergency, Construction, Mining, Oil & Gas, Military, and Customized. The collage includes photos of modular units, heavy machinery, and technical drawings of modular layouts.

Emergency

Construction

Mining

Oil & Gas

Military

Customized

Market Sectors

CORIMEC
MODULAR SOLUTIONS

16

17

Emergency

Construction

Mining

Oil & Gas

Military

Customized

Market Sectors

CORIMEC
MODULAR SOLUTIONS

16

17

Emergency

Construction

Mining

Oil & Gas

Military

Customized

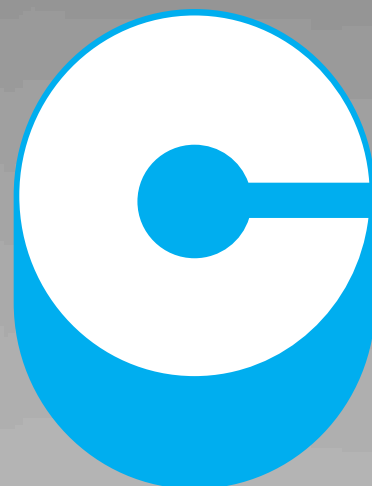
Market Sectors

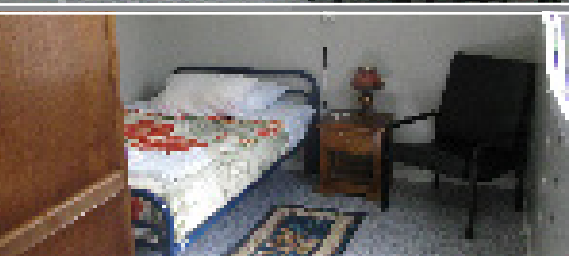
CORIMEC
MODULAR SOLUTIONS

16

17

Major Projects





MILITARY



- U.S. Army



- U.S. Central Command



- Defense Logistics Agency



- NATO / NAMSA



NATO Supply Agency / K-FOR

LOCATION:

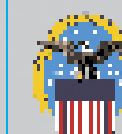
Pristina, Kosovo.

DESCRIPTION:

1000-man military camp complete with accommodation units, offices, kitchen/dining, cafeteria, clubs, cinema and gymnasium, including civil works.

URBANIZED AREA: 35,000 sq.m.

COVERED AREA: 9,700 sq.m.



Defense Logistics Agency

Theodor Wille Intertrade GmbH

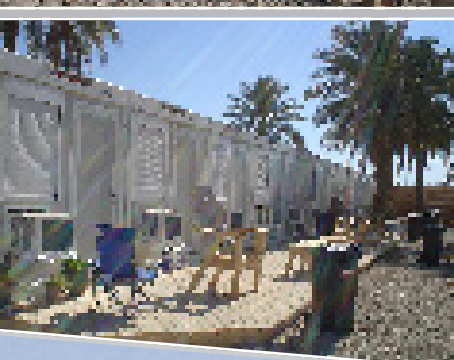
LOCATION:

Kandahar, Afghanistan

DESCRIPTION:

Design and provision of containerized housing units and ablution units.

PRODUCTION: 280,000 sq.m. to accommodate 40,000 soldiers.



- UK Ministry of Defence



- French Ministry of Defence



- Italian Army



- Irish Ministry of Defence



- Swedish Armed Forces



- Argentinian Army



- Portuguese Army



- Kellogg Brown & Root



- Parsons



Kellogg Brown & Root Services International, Inc.

LOCATION:

Iraq – Kuwait.

DESCRIPTION:

Provision, delivery and on-site installation of prefabricated containerized units (accommodation, offices and ablution units).

COVERED AREA: 225,000 sq.m.



Kellogg Brown & Root Services International, Inc.

LOCATION:

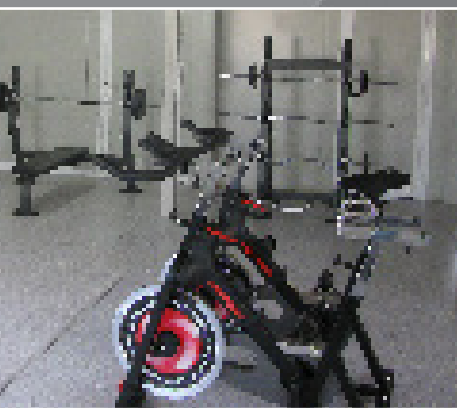
Tallil, Iraq.

DESCRIPTION:

Military camp consisting of prefabricated living units (trailers) and ablution units, from design to civil works and on-site installation.

URBANIZED AREA: 236,000 sq.m.

COVERED AREA: 45,400 sq.m. to accommodate 5,000 troops.



OIL & GAS MINING



- BP Amoco Exploration (In Amenas) Ltd.



- British Petroleum (BP)



- CBI Colombiana S.A.



- Equion Energia Ltd



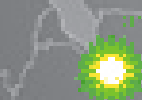
- First Calgary Petroleum Ltd.



- Fluor Intercontinental Inc.



- Halliburton Energy Services



- In Salah Gas (Sonatrach, BP, Statoil)



- Petrex S.A.



- Petrofac



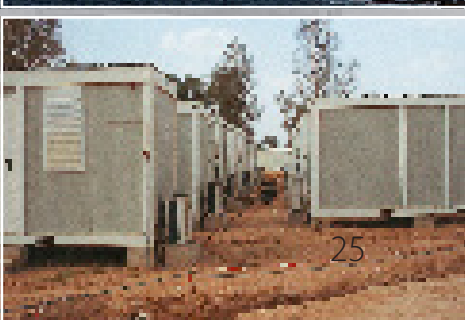
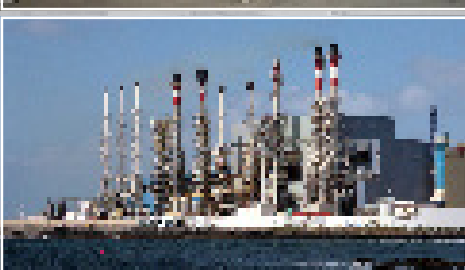
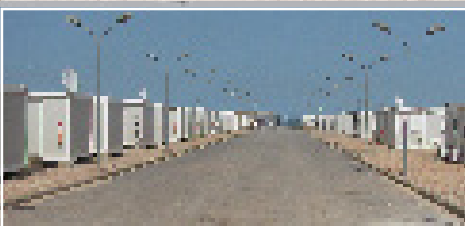
- Petrovietnam Drilling



- PSL Energy Services



- Red Med



SNC-Lavalin

LOCATION:

Cerrejón, Colombia

DESCRIPTION:

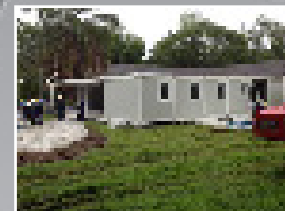
Design, provision, delivery and installation of accommodation buildings to realize a 500-man camp.



- Saipem
- Schlumberger
- SNC-Lavalin
- Wood Group Engineering Ltd.

Schlumberger

Schlumberger

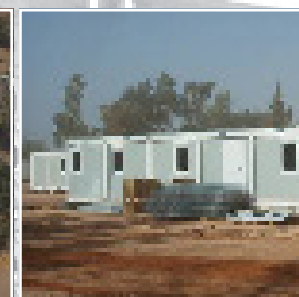
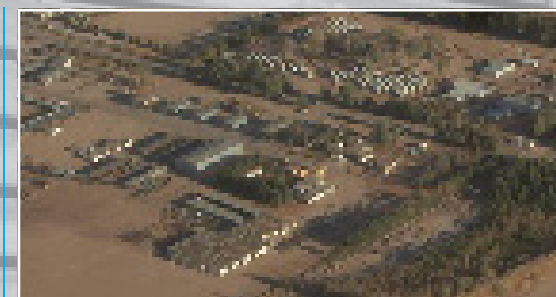


LOCATION:

Barrancabermeja, Colombia

DESCRIPTION:

Design, manufacturing, delivery and on-site installation of modular containerized office buildings and two-storey accommodation units.



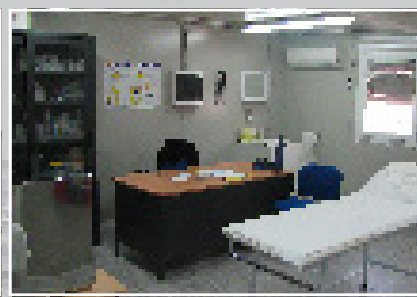
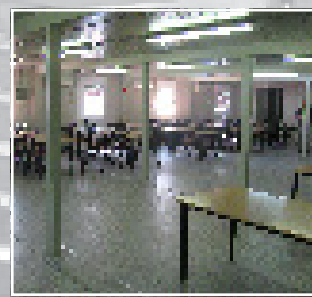
Petrofac

LOCATION:

Teg / Reg, Algeria.

DESCRIPTION:

Supply, delivery and installation of containerized accommodation buildings and facilities.



Saipem Almafrique

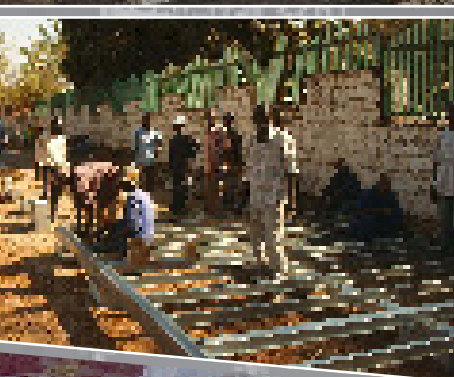
LOCATION:

Berkine Basin / Arzew / Hassi Messaoud, Algeria.

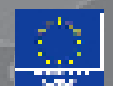
DESCRIPTION:

Two 400-man and one 150-man "Turn-Key" Camps complete with accommodations, ablutions, kitchens, laundries, offices, infirmaries, guard posts, warehouses, including civil works.

PRODUCTION: 27,500 sq.m.



- EUBAM



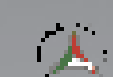
- European Union Planning Team for Kosovo



- FEMA



- Médecins Sans Frontières



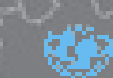
- Protezione Civile



- United Nations



- United Nations Development Programme

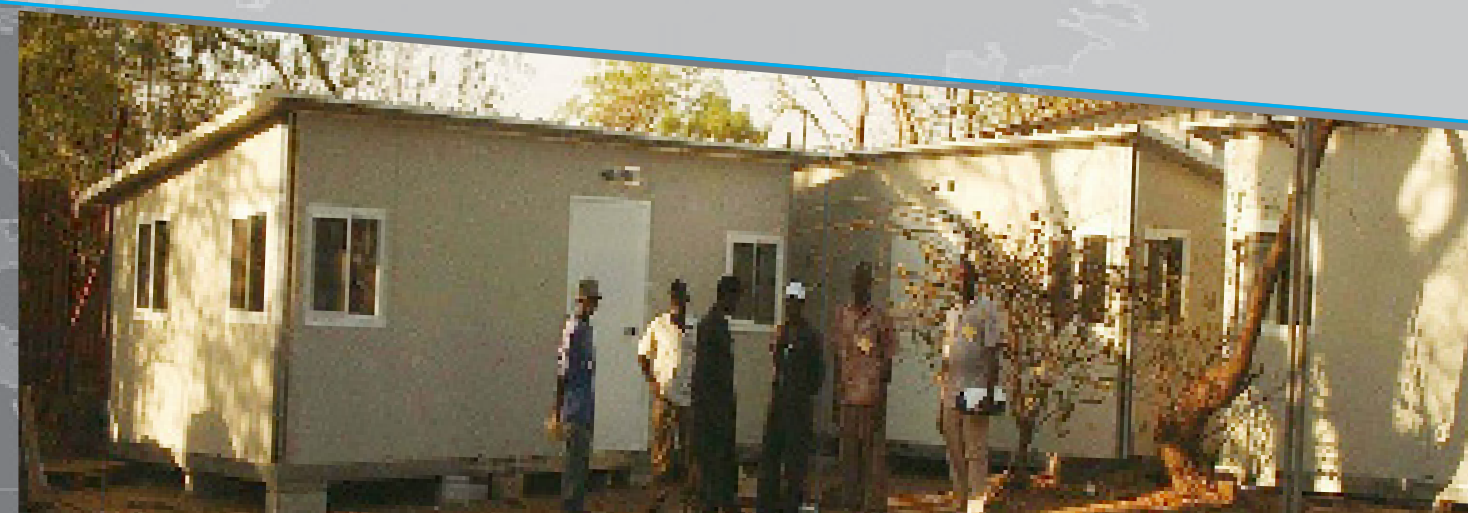


- UNICEF



- UNMIK

EMERGENCY



United Nations

LOCATION:

Worldwide United Nations Missions.

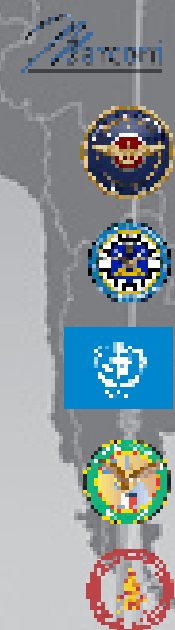
DESCRIPTION:

Provision of single, 3 and 6 module prefabricated buildings specifically designed to meet the client's requirements.

PRODUCTION: 1,000,000 sq.m.



CUSTOMIZED

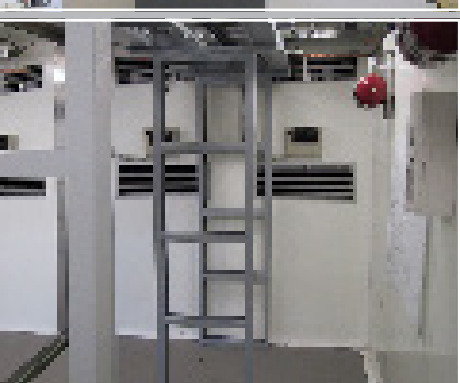
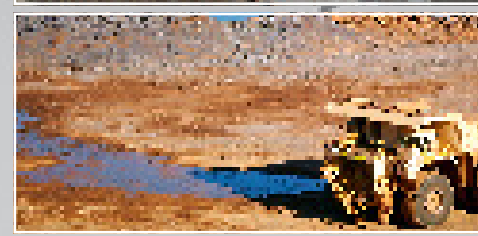
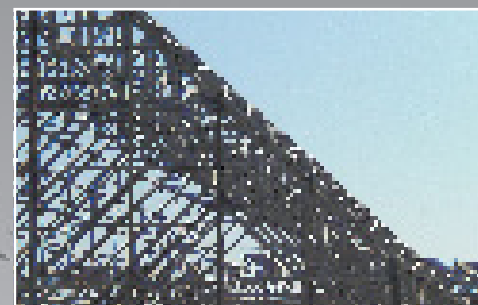


- Marconi Communications
- NAVAIR Orlando
- UK Ministry of Defence
- United Nations
- U.S. Army Central Command
- Vigili del Fuoco

CONSTRUCTION

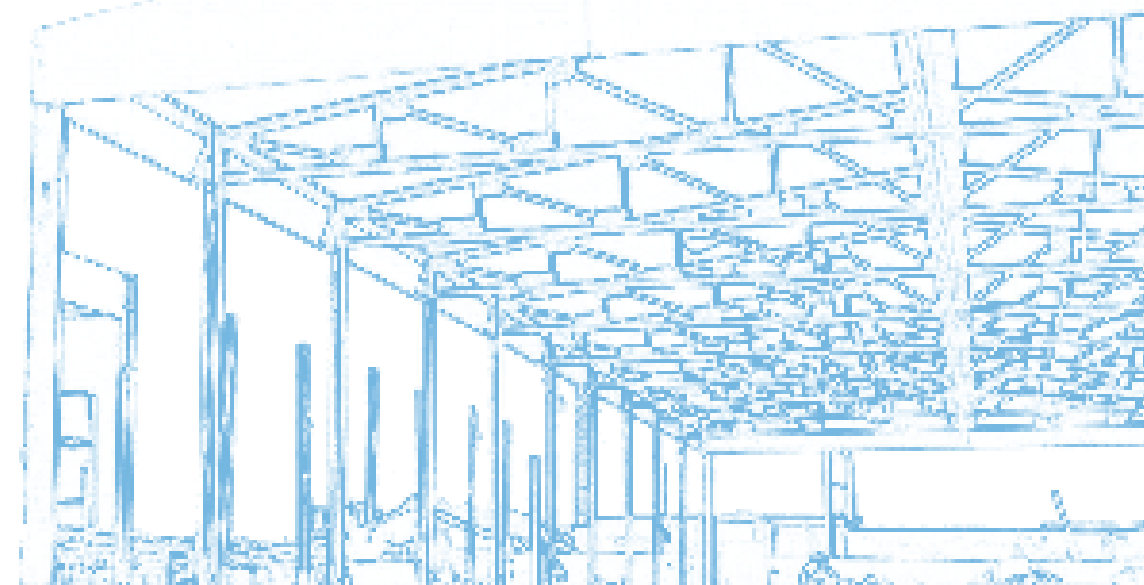


- Cimentos De Beira, Lda
- CO.C.I.V., Consorzio Collegamenti Integrati Veloci
- Entrepouse Contracting
- I.M.S. Italy



Notes

This image shows a single sheet of white paper with horizontal ruling lines. The lines are evenly spaced and run across the width of the page. There are no margins, text, or other markings on the paper.





CORIMEC Italiana S.p.A.
Via Caorsana, 19 - 29012
Fossadello di Caorso - Piacenza - Italy
Tel. +39 0523 810410 - Fax +39 0523 821345
www.corimec.com

Edition 2015